

MONOCRYSTALLINE HEE215M Full Black 260 Watt

The solar module HEE215M Full Black is manufactured with high efficiency monocrystalline cells designed and manufactured by industry leading suppliers. The photovoltaic textured glass of high optical transmission and diffuse light collection, as well as 3 Bar Bus system provides an homogeneous aesthetic combined with a wide range of powers. Finally, the double reinforced anodized aluminium frame makes a rigid structure to install the module on any application, whether residential or large ground mounted facilities.



HIGH EFFICIENCY



BIPV integration (optional)



3 BUS BAR



RESISTANCE TO RAIN AND SNOW



TEXTURED GLASS



LOW RADIATION CONDITION



PYRAMIDAL GLASS (optional)



60 CELLS



1.20m CABLE



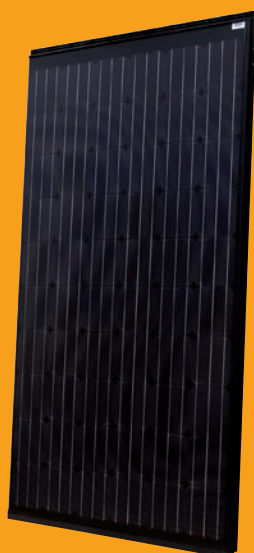
10 YEARS WARRANTY PRODUCT



4 mm GLASS



MAXIMUM STRENGTH RESISTANCE 5.400 Pa



HIGH POWER

- 240-260 Wp. Wide range of power
- Homogeneous aesthetics
- Maximum reliability

DIMENSIONS

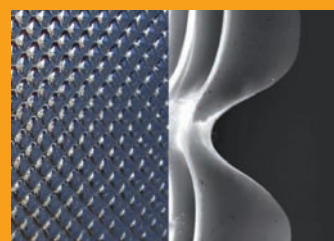
Length x Width: 1680 x 990 mm

Thickness: 40mm

Weight: 22 kg

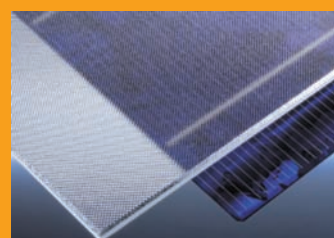
BIPV

Built in roof mounting systems providing maximum sealing



PYRAMIDAL GLASS

The pyramidal structure of solar glass ensures high production at low radiation conditions, and reduces the reflection of incident light. It increases up to 10% annual energy generated in a vertical installation.



TEXTURED GLASS

Our standard modules use a textured glass, which provides better properties when reflection loss and heat dissipation against plain glass.

